

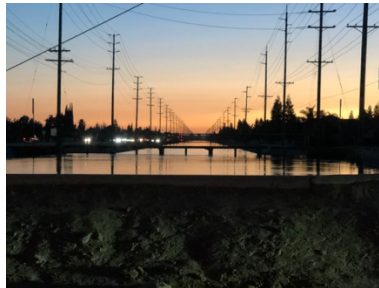
Writing About Your Photos: The Two-Step Process

The purpose of this assignment is to create a written component to your photography. In order to learn more about the photos you create, it's important to pay attention to the process by which you produce your work. Therefore, for each photography assignment you complete for this class, you are to answer the following series of questions before revising them into caption form. It's a two-step process.

Step 1: For each photo, answer the following questions with relevant details:

1. **Who** or **what** is the subject of the photo?
2. **When** was the photo taken?
3. **Why** was this subject chosen for this assignment?
4. **How** was this photo created?

Example:



1. **Who** or **what** is the subject of the photo?

This is a photo of one of Modesto's canals. I looked it up on a map. It's called Moulton Lateral.

2. **When** was the photo taken?

It was taken at sunset on Thursday, August 23, 2018.

3. **Where** was this photo taken?

This photo was taken from my car as I sat at a stop light on Claus Rd., just before crossing Briggsmore.

4. **Why** was this subject chosen for this assignment?

I took this photo because I recognized symmetry.

5. **How** was this photo created?

I was at a stop light on Claus Rd when I turned to my right and noticed a beautiful symmetrical vision. I had time to roll down the window and capture this image with my cell phone before the light turned green and I had to start moving.

Step 2:

Combine the answers to the five questions above into a written description of the photo and the process and circumstances under which the photo was taken. You are now writing a caption for the photo.

How to order your information: Begin by describing what the viewer can see. Then provide information that is not obvious or recognizable in the visuals of the photo itself.

Example:

Moulton Lateral Canal after sunset on Thursday, August 28, 2018. The photo was taken from a car while waiting at a stop light on Claus Rd. at Briggsmore. I recognized symmetrical shapes in the canal and electrical poles and framed the vanishing point in the middle of the frame.

Assignment: Complete steps 1 and 2 for the photos you are submitting.